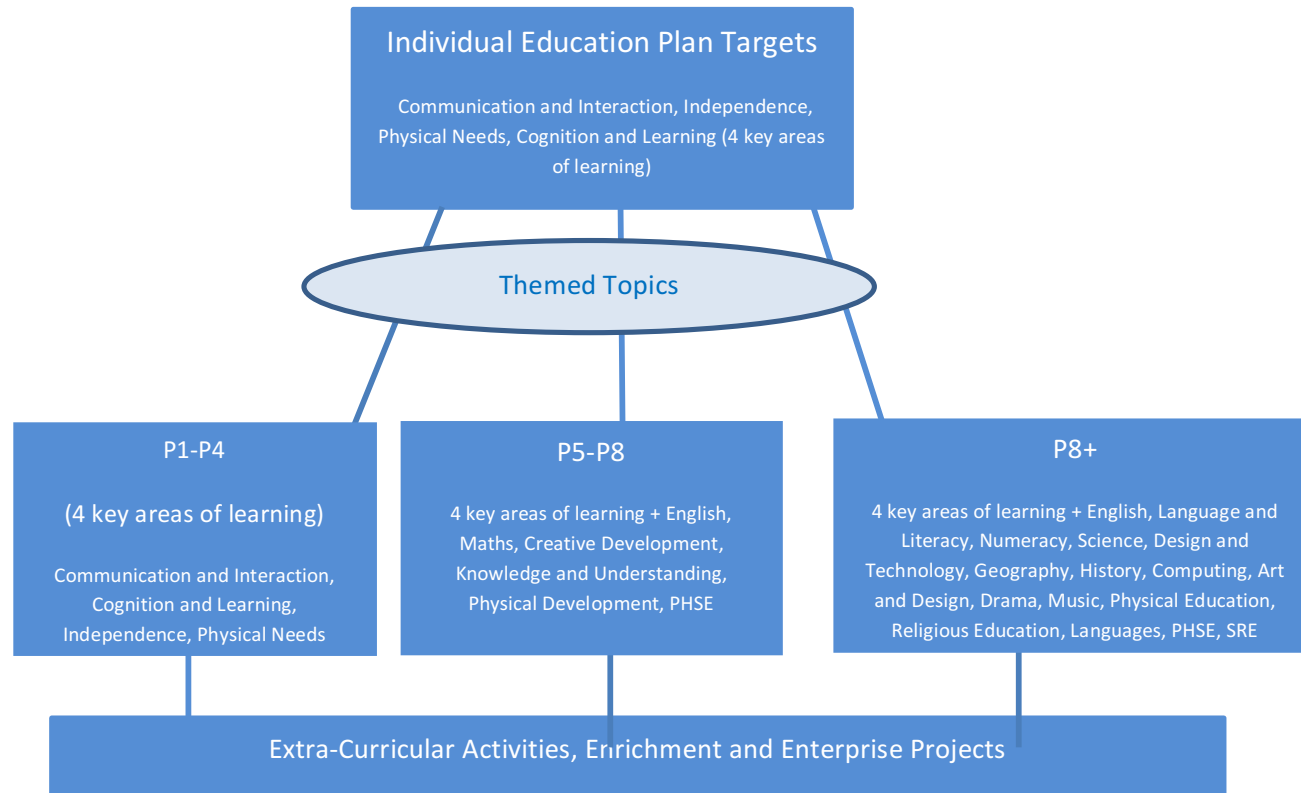
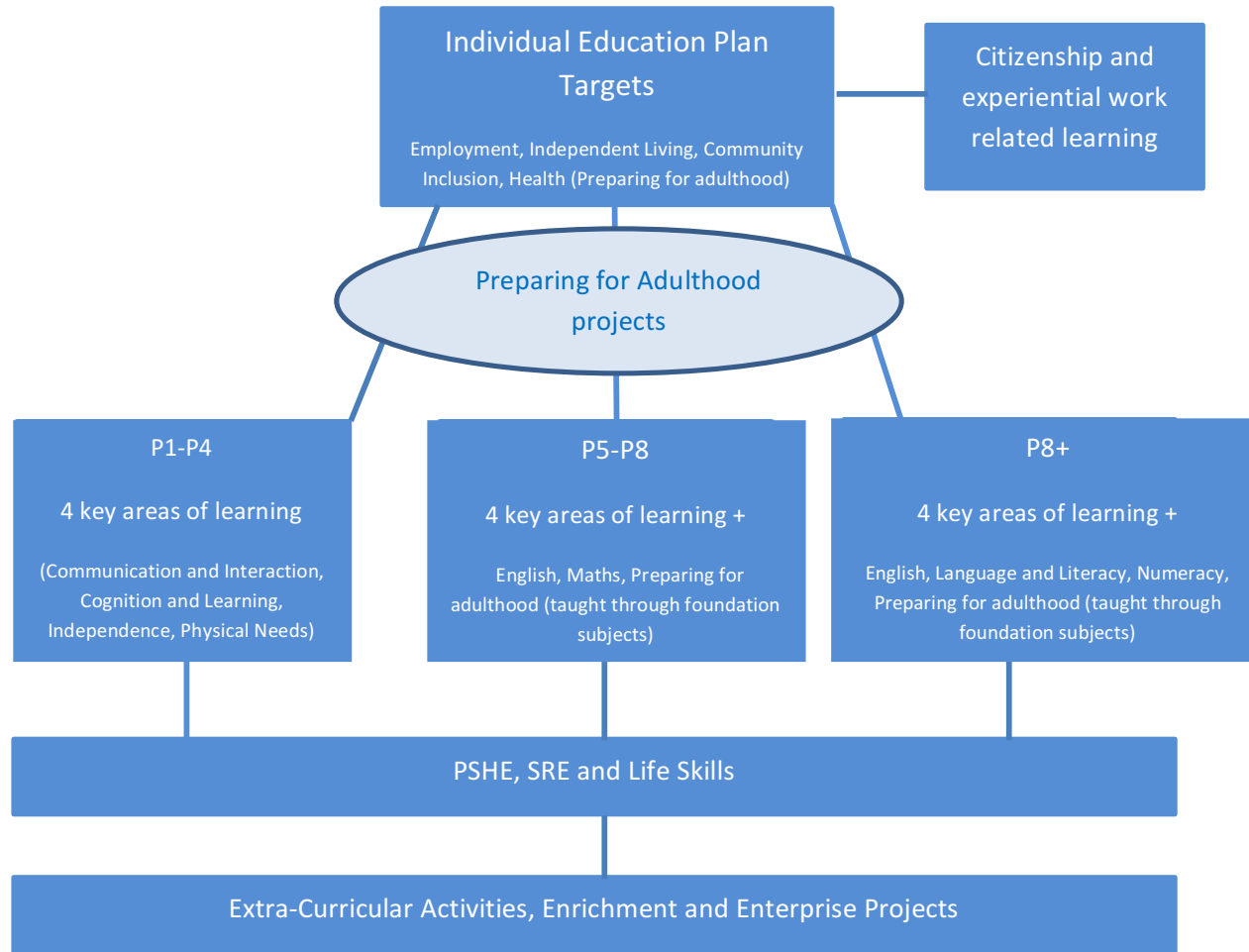


Coppice School
Curriculum Models
KS1 – KS5
2016 - 2017

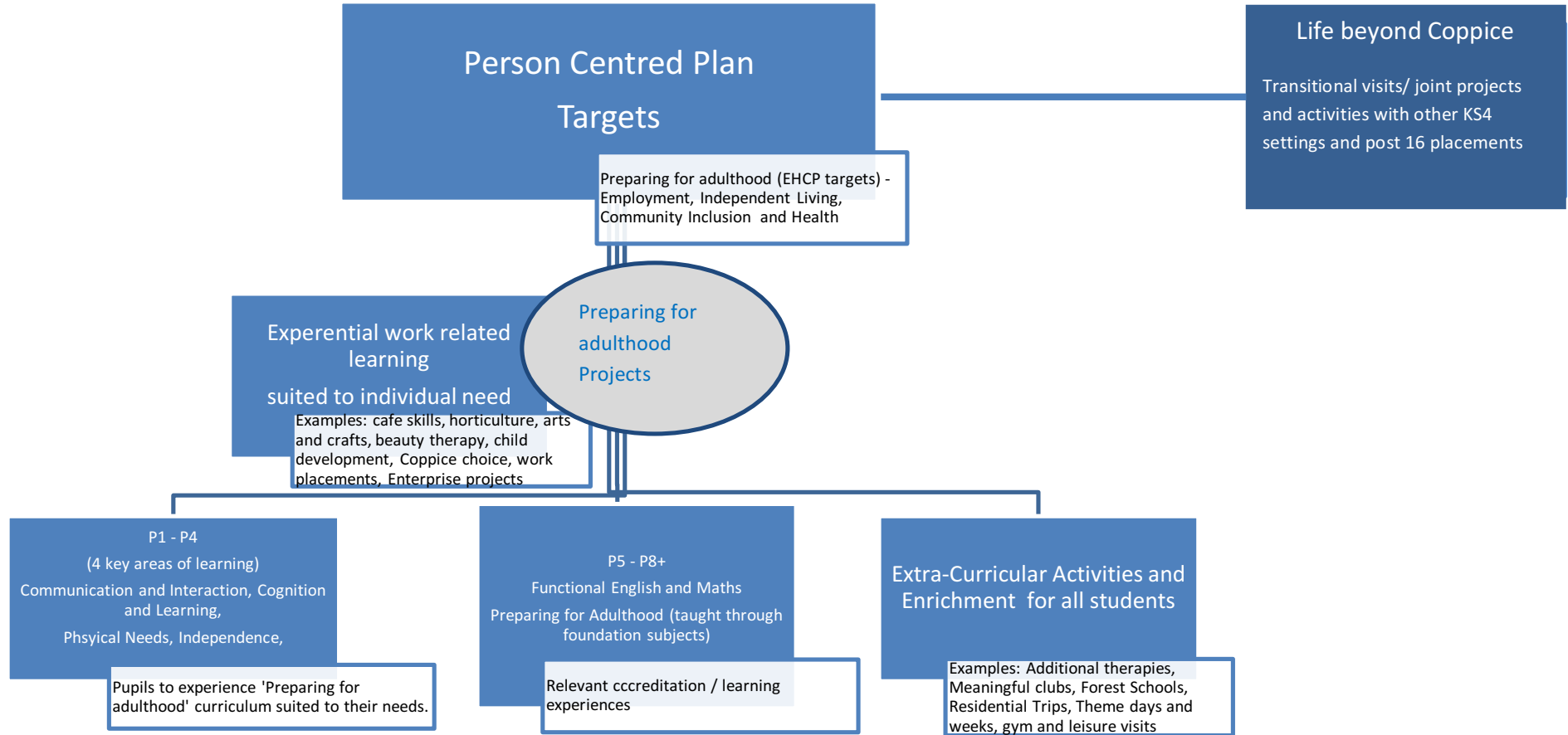
KS1/ KS2 Curriculum model



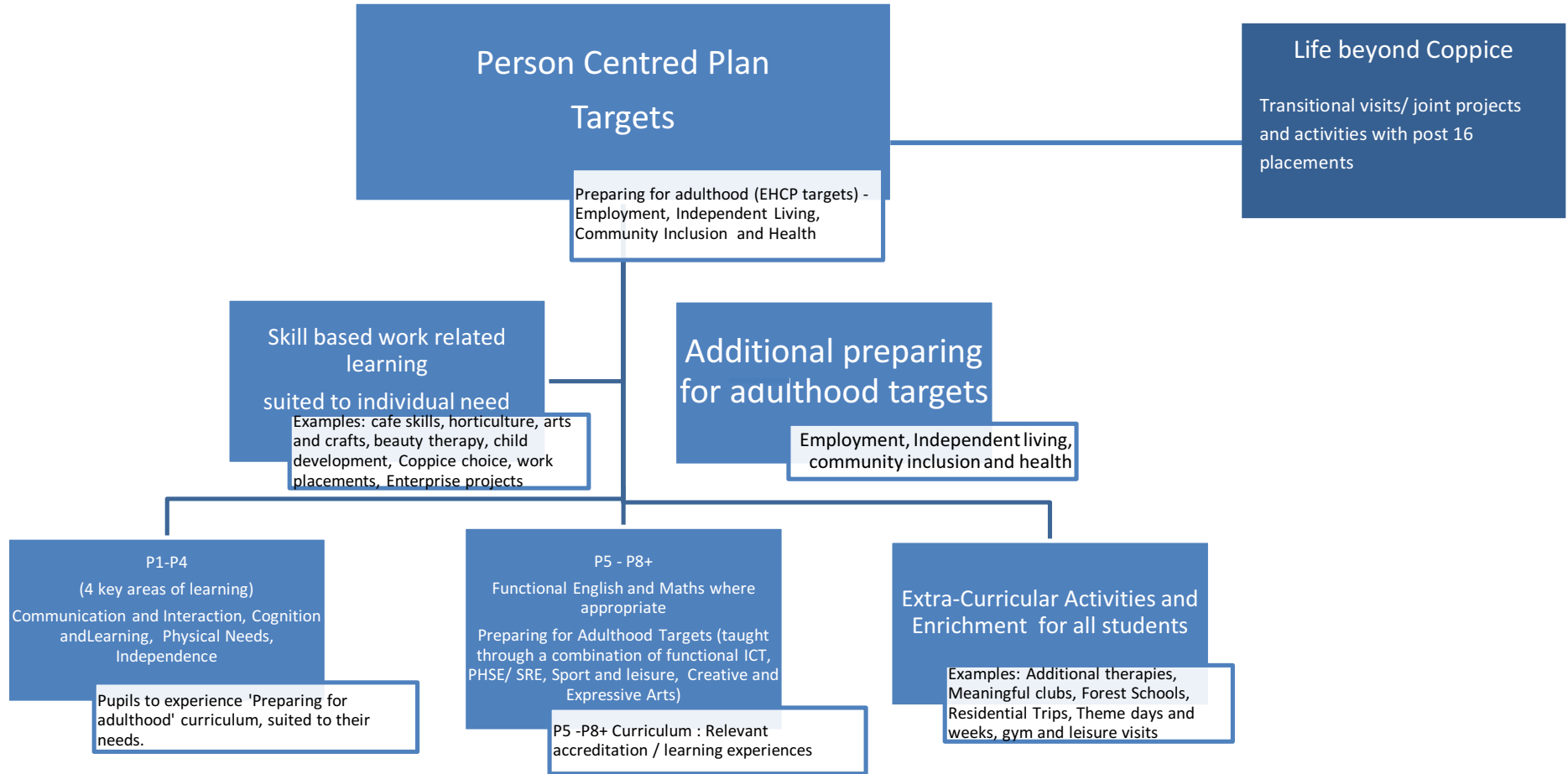
KS3 Curriculum model



KS4 Curriculum model



KS5 Curriculum Model



Person Centred Plan Targets

Preparing for adulthood (EHCP targets) - Employment, Independent Living, Community Inclusion and Health

Life beyond Coppice

Transitional visits/ joint projects and activities with post 16 placements

Skill based work related learning suited to individual need

Examples: cafe skills, horticulture, arts and crafts, beauty therapy, child development, Coppice choice, work placements, Enterprise projects

Additional preparing for adulthood targets

Employment, Independent living, community inclusion and health

P1-P4

(4 key areas of learning)

Communication and Interaction, Cognition and Learning, Physical Needs, Independence

Pupils to experience 'Preparing for adulthood' curriculum, suited to their needs.

P5 - P8+

Functional English and Maths where appropriate

Preparing for Adulthood Targets (taught through a combination of functional ICT, PHSE/ SRE, Sport and leisure, Creative and Expressive Arts)

P5 -P8+ Curriculum : Relevant accreditation / learning experiences

Extra-Curricular Activities and Enrichment for all students

Examples: Additional therapies, Meaningful clubs, Forest Schools, Residential Trips, Theme days and weeks, gym and leisure visits